

eXchanger PDMS
eXchanger PDS

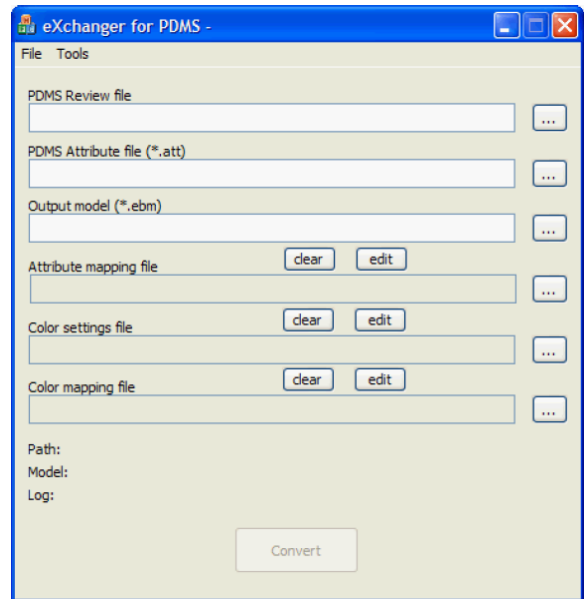
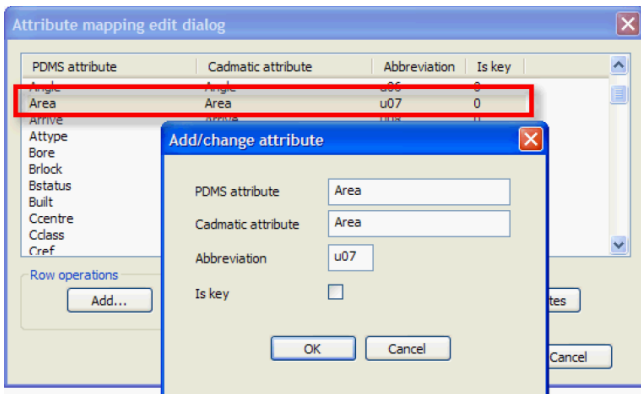
2015Q3

eXchanger PDMS and eXchanger PDS converts models from PDMS format and PDS format respectively to eBrowser format and Cadmatic 3D models. The converted models are significantly smaller in size and contain all the attributes and structures of PDMS or PDS files.

Cadmatic eXchanger PDMS and eXchanger PDS

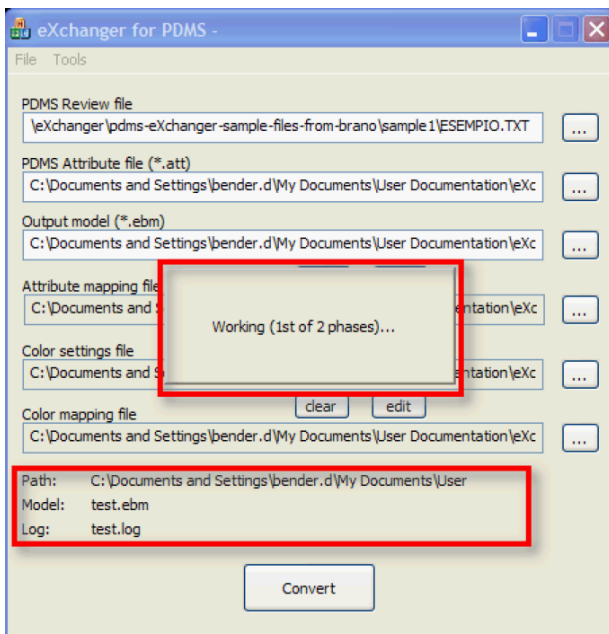
The tool allows users to easily convert PDMS or PDS format models into eBrowser or Cadmatic 3D models for further use. The tool is extremely user-friendly and simple to use - when converting the user simply chooses the attributes to import and customizes the colours in the Cadmatic environment.

The versatile tool allows the user to select the exact attributes to be imported and to filter out any information that is not to be shared.

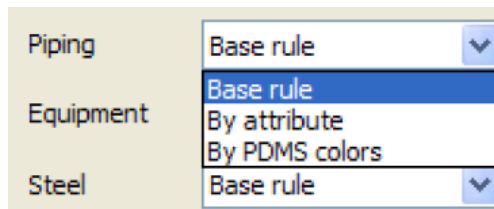


The conversion can be done directly to eBrowser format or to 3DD format for later use and imported into the 3D software inside a single project. The converted models can be utilized to combine different disciplines and

software in a single project. If a complete project is done in Cadmatic software and several modules in PDMS format - it allows the user to import these modules and have the complete project in one format. The models can be managed with geometrical boxes and then combined after which the merged model can be reviewed as a single unit. The tool also allows PDS models to be partly converted and is able to convert DGN files created in any other software.

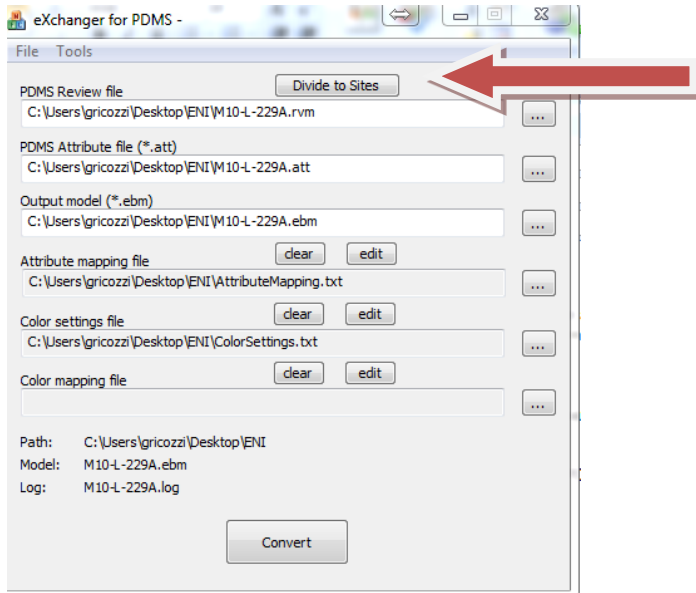


The conversion tool uses the Cadmatic model review format which makes it easy to manage the 3D model. The review model can be utilized as a reference model and loaded into a real design project as well.



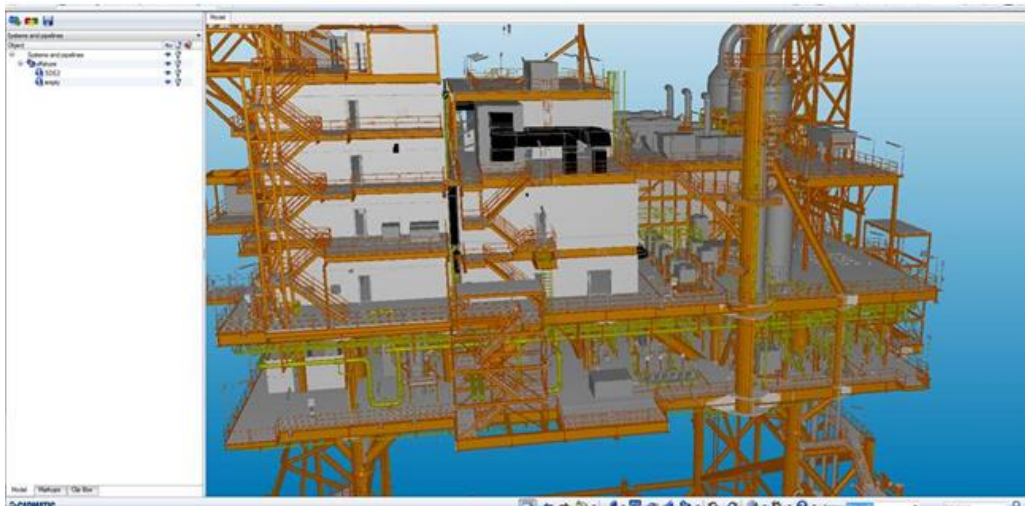
Handling big models and combining modified, old and new parts

It is possible to divide the file on PDMS sites RVM files, using “Divide to Sites” feature. This allows the conversion of big model sizes and also the combination of modified parts of projects with old models.



Converted models lighter and easier to use

The converted models are drastically lighter and can therefore be shared via the Internet with ease and used for design, revamp, construction follow up and review purposes on any workstation or laptop. If converted to eBrowser models, they can be used for project management purposes, to navigate through the model and to access any information required. The converted models can also be interfaced with documentation or other software and databases if desired.



Example of PDMS model converted into an eBrowser model

Legal Notice

Cadmatic®, **eBrowser®**, **Intergraph®**, **Smart3D®**, **PDS®**, **PDMS®** and **Windows®** are registered trademarks. Any other product or brand names maybe registered trademarks or trademarks of their respective owners.